

## Standard Supplies


Please use MAX double wide (approx. 200mm/ 8in) width ribbons and tape rolls

For new users, remember that both ink ribbons and tape rolls are needed to use the printer.

### Bepop Tape Rolls

Max dedicated tape rolls (Available Colors)

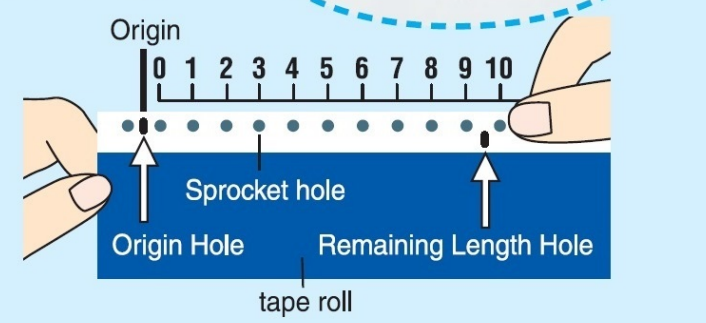
Package: 2 rolls per carton Vinyl size: 205mmx10m (8.07inx32.81ft)

 (Indoor use)	SL-S201N	Black
	SL-S202N	White
	SL-S203N	Red
	SL-S204N	Blue
	SL-S205N	Yellow
Application Sheet (For transferring cut designs)	SL-S200AP	Green

\*Due to variations in printing inks, the actual color of the tape roll may differ from the catalog representation.

### Check the remaining length

You can check the remaining length by comparing the length between the origin hole and the remaining length hole on the edge of the tape or by checking the software status monitor.



### Ink Ribbon Cassettes

Max dedicated ribbon cassettes (Available Colors)

SL-R201T BLACK	SL-R203T RED	SL-R204T BLUE
SL-R206T DEEP GREEN	SL-R208T YELLOW	SL-R212T ORANGE

The cassette can be re-used, so please request ribbon refills after use.

\*The ribbon cassette should be exchanged after 10~15 refills.

Package: 1pc. per box / 5 boxes per carton. Size: 212mmx50m (8.35inx164.04 ft.)

### Ink Ribbon Refill

Max dedicated ribbon Refills (Available Colors)

SL-TR201T BLACK	SL-TR203T RED	SL-TR204T BLUE
SL-TR206T DEEP GREEN	SL-TR208T YELLOW	SL-TR212T ORANGE

\*Bepop can only use the dedicated ribbon refills. Refills must be inserted into the Max dedicated cassette.

Package: 1pc. per box / 5 boxes per carton. Size: 212mmx50m (8.35inx164.04 ft.)

### Process Color Ink Ribbon Cassettes

Max dedicated ribbon cassettes (Available Colors)

SL-R215T CMYK-C	SL-R216T CMYK-M	SL-R217T CMYK-Y	SL-R218T CMYK-K
--------------------	--------------------	--------------------	--------------------

Package: 1pc. per box / 5 boxes per carton. Size: 212mmx50m (8.35inx164.04 ft.)

1)The cassette can be re-used, so please request ribbon refills after use.

2)The ribbon cassette should be exchanged after 10~15 refills.

3)Be careful not to use spot color black/yellow instead of CMYK yellow/CMYK black (or vice versa), as it will not reproduce the correct colors.

### Process Color Ink Ribbon Refill

Max dedicated ribbon Refills (Available Colors)

SL-TR215T CMYK-C	SL-TR216T CMYK-M	SL-TR217T CMYK-Y	SL-TR218T CMYK-K
---------------------	---------------------	---------------------	---------------------

Package: 1pc. per box / 5 boxes per carton. Size: 212mmx50m (8.35inx164.04 ft.)

\*Bepop can only use the dedicated ribbon refills. Refills must be inserted into the Max dedicated ribbon cassette.

### PRODUCT SPECIFICATIONS

Product	CPM-200GM
Printer	Printing method: Thermal transfer Print resolution: 300dpi
Cutter	Printing speed: 25mm (1.0") /sec. at standard Accuracy: 0.025mm (0.001") /step Cutting speed: 120mm (4.7") /sec. at maximum
Maximum printing range	200mm (8") x 2000mm (78.7")
Interface	USB: USB2.0 Full Speed, Allowable cable length 2meters (78.7") Ethernet: 10BASE-T / 100BASE-TX
Working environment	Temperature: 10~35°C, (50~95°F) Humidity: 35~80% (No dew condensation allowed)
Power source	AC 100-240V 50/60Hz 1A
Power consumption	150W at maximum, 20W at standby
Outer dimensions	317mm (12.5") x 425mm (16.7") x 315mm (12.4") (W)x(D)x(H)
Weight	15.5kg (34.2lbs)

**CONTENTS** CPM-200G, power cord, cutting blade, weeding tool, squeegee, blade holder(pre-attached), blade holder replacing spanner, BepopPC EX software, and operation manual.

**PC REQUIREMENTS** For windows 10/8.1/8/7 operating systems. Windows® is a registered trademark of Microsoft Corporation(US) in U.S.A. or other countries.

Distributor:



Showing the way  
CÔNG TY TNHH VINACOM  
Web: [www.VinacomElectric.com.vn](http://www.VinacomElectric.com.vn)

Trụ sở:

A39 Bạch Đằng, Tân Bình, Tp. HCM  
Tel: (08) 3848 7799 Fax: 3848 8688  
Hotline: 0913 992 595

Chi nhánh:

2 F1, 113 Bg, Yên Hòa, Cầu Giấy, HN  
Tel: (04) 6290 3579 Fax: 6250 6988  
Hotline: 0972 718 666

CREATE YOUR OWN SIGNS AND LABELS  
In-house cutting and printing machine.

MAX

Bepop  
CPM-200G

Save time  
Save money  
Improve processes

### Safety Signage



### Labels



\*The largest printing range is 200mm x 2m (8" x 78.7"). Including the margins, the vinyl supports 206mm or approx. A4 width.

### Guidance Signage



### CPM-200G Overview

- Meet your sign and labeling needs in real-time by printing in-house.
- Eliminate waste due to lot size.
- Eliminate the need to place orders and stock labels and signs.
- Customize content and shapes freely to fit the needs of your site.



# Bepop High quality signs and labels on-demand!

## Print and cut the exactly what you need in-house, anytime!

### ●Case Study: Safety Guidance Signage

**Sign is purchased:**

**Before**

**Contents:**

- 1)"All visitors must wear personal protective equipment while on site"
- 2) Generic guidance mark

**Sign is made on site:**

**After**

**Contents:**

- 1) "NEED PROTECTIVE FOOTWEAR?"
- 2) "Go to the Safety Department 1st Floor-Admin Building."
- 3) Photo of destination is displayed with red arrow marking entrance.
- 4) Safety shoes guidance mark is used.

Kaizen

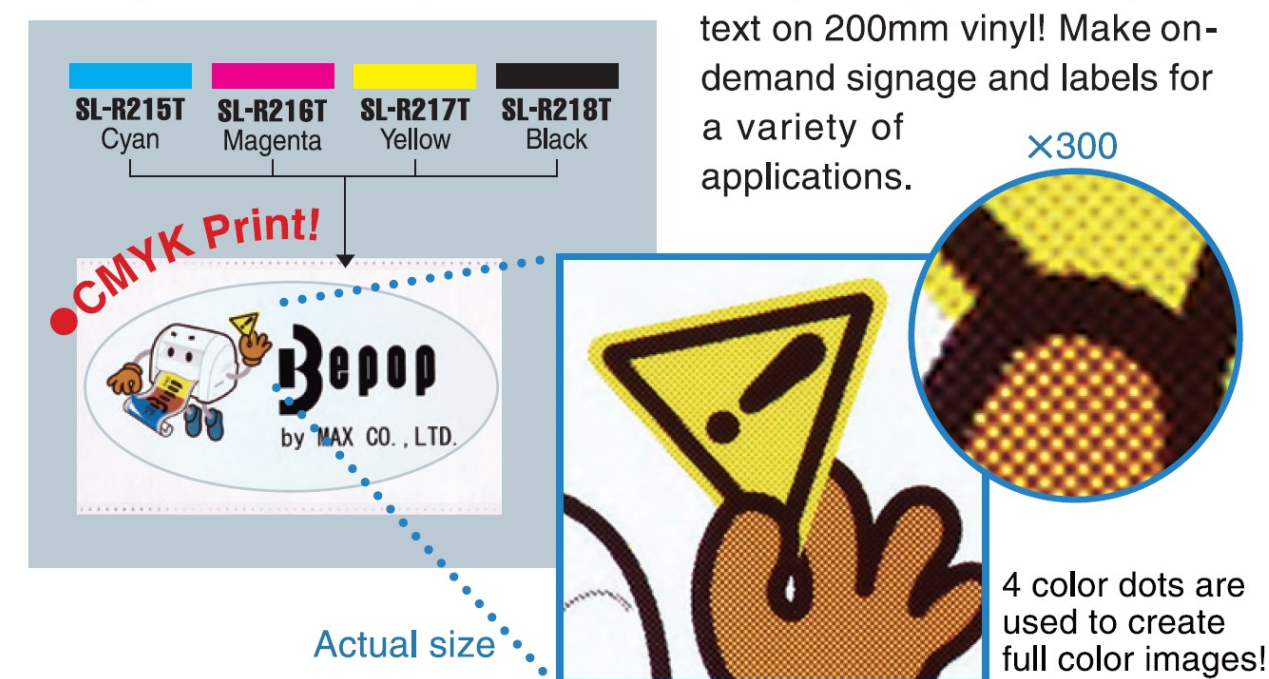
**Conclusion :** The CPM-200 allows you to tailor content to the exact needs of your site. In this case, leading to improvements in safety compliance for both employees and visitors.

### ●Built-in plotter can cut any shape you need!



## Print in full color on 200mm wide vinyl!

The CPM-200G can print in vivid full color using 4 specialized process color ink ribbons (Cyan, Magenta, Yellow, and Black). Unique functions mean you can cut and print combinations of photos, illustrations, and text on 200mm vinyl! Make on-demand signage and labels for a variety of applications.



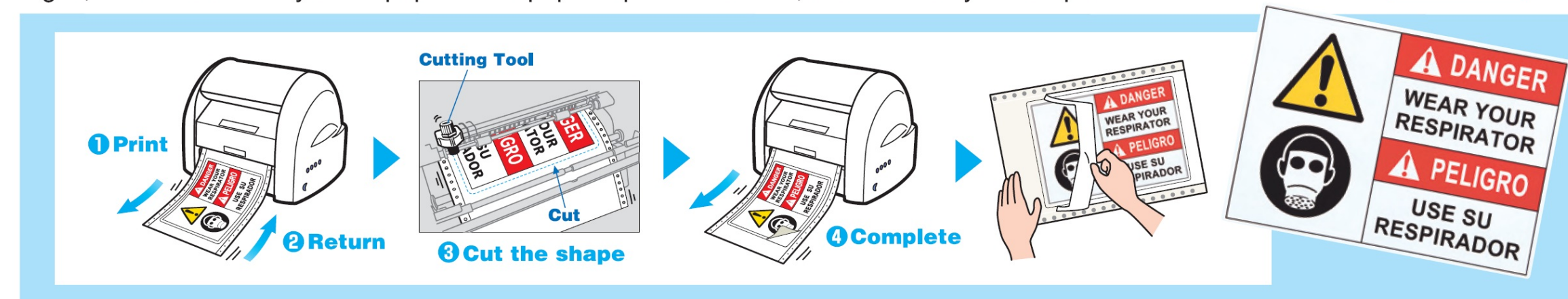
### ●Use photos, illustrations, and text together!



\*The largest printing range is 200mm x 2m (8"x78.7"). Including the margins, the vinyl supports 206mm or approx. A4 width.

## Make labels, signs, and cut-lettering easily!

Anyone can design labels or signage easily using BepopPC EX editing software. After designing your labels or signs, send the data to your Bepop. The Bepop will print the colors, and then cut your shape.



## Import your logos and photos!

Convenient features of the BepopPC EX software.



## OVER 1,400 symbols and templates

### Enjoy a large variety of symbols

- GHS
  - ISO
  - Facilities maintenance
  - Way finding
  - Fire safety
  - Holiday themes
- And much, much more!



### Templates

Choose templates like bilingual (Spanish and English) safety signage, product management labels, safety labels, and much more!



## Crammed full of convenient features!

### ●Import Photo Images

Print full color photo images.

### ●Import Documents

From Word®, Excel® and Powerpoint®.\*

### ●Auto Copy

Make automatic copies of labels, and let the software position the data in the most cost efficient way.

### ●Serial Numbering

Serialize numbers, letters, and barcodes. The software automatically positions your serialized labels.

### ●CSV Database Connect

Automatically fill in labels using content from a spreadsheet.

### ●BepopScanEX

Import company logos as symbols using BepopScanEX.

### ●Bordering

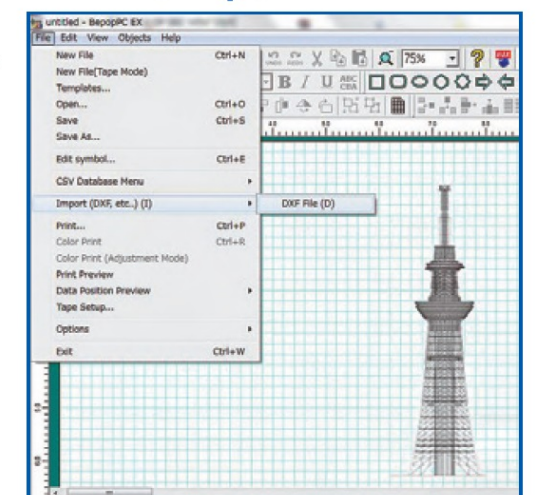
Automatically draw a unique cut-shape around selected objects.

\*Word®, Excel® and Powerpoint® are registered trademarks of Microsoft Corporation (US) in U.S.A. or any other countries.

### ●Import CAD Data (.dxf file type only)

Import CAD printing data (.dxf file type). Check with your local dealer for information on testing compatibility with your software.

### DXF File Import



### ●Barcoding

Make QR codes®, UPC codes and much more!\*

### ●Cut Lettering

Change letters into cutting data with the click of a button.

### ●Automatic Spacing and Alignment

Save time finalizing your designs by using the automatic spacing and alignment functions in the software.

\*QR Codes® is a registered trademark of Daiso Wave Company Limited.

## Application Photo Gallery

